

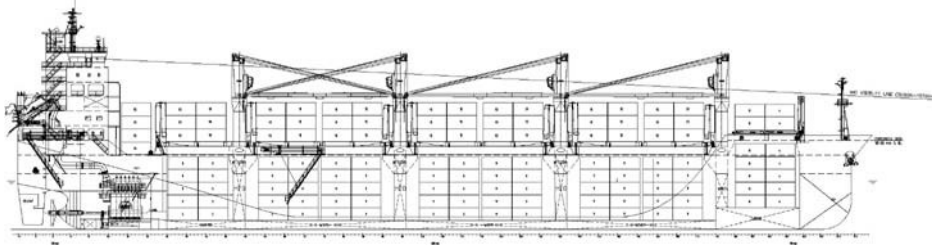


ATLANTIC RO-RO CARRIERS, INC.

95 River Street, 3rd Floor, Hoboken, New Jersey, 07030

Tel: 201.356.2300 Fax: 201.356.2299 e-mail: info@arrcm.com

VESSEL DESCRIPTION



Name: MV "ATLANTIC RUNNER II"

Type: Multi-Purpose Dry Cargo Ship, Equipped for Carriage of Containers,

Registered Owners: ATLANTIC GEMINI NAVIGATION LIMITED

Technical Operator: SC Atlantic Ship Management, Ukraine

Hull & Machinery: Marsh NV; P&I: West of England

Yard: Zhejiang Ouhua Shipyard China

Built: 2010

Flag: Malta

Port of Registry: Valletta

IMO- No.: 9509619

Call Sign: 9HA4158

Classification GL +100 A5 E1 Multipurpose dry cargo ship BWM Equipped for carriage of containers

DBC SOLASII2, Reg.19 G IW NAV-O Strengthened for heavy cargo +MC E1 AUT EP-D

Ice class GL E1

Vessel Dimensions:

| | |
|----------------------------|----------|
| LOA | 179.50 m |
| LBP | 169.00 m |
| Beam | 28.00 m |
| Depth | 15.10 m |
| Draft summer, freeboard | 10.80 m |

| | |
|--------------|---------|
| Draft design | 10.00 m |
|--------------|---------|

Deadweight:

| | |
|----------|--------------------------|
| Summer | 33271 mts on draft 10.8m |
| Winter | 32255 mts on draft 10.6m |
| Tropical | 34291 mts on draft 11.1m |
| Fresh | 34364 mts on draft 11.1m |



WWW.ARRCM.COM





ATLANTIC RO-RO CARRIERS, INC.

95 River Street, 3rd Floor, Hoboken, New Jersey, 07030
Tel: 201.356.2300 Fax: 201.356.2299 e-mail: info@arccm.com

Tonnage International 22.863 GT / 10.602 NT
Tonnage Suez 23.356,82 GT / 21.969,70 NT
Tonnage Panama 19.050,00 NT

Lightship 10285,3 t
Container capacity: 20 FT / 40 FT
Deck: 484 / 218
Hold: 674 / 327
Total: 1158 / 545

Vessel's container intake is always subject to vessel's stability / trim / deadweight / permissible stack weights / Lashing forces and subject to regulations of visibility.

Cargo Volume: 39,042 cbm (without Tween Decks)
36,522 cbm (with Tween Decks)

Main engine: Licencor MAN B&W, Copenhagen
Licensee/Maker STX, Korea
Type 1 x 6S50 MC-C7
Output MCR 8.800 KW

Diesel generators: Maker MAN B&W
Type 2 x 6L 16/24
Output 1 x 502 kWel at 1.000 rpm 50 hz
Type 1 x 5L 16/24
Output 1 x 418 kWel at 1.000 rpm 50 hz

Cranes: Maker MacGregor-Hdgglunds
Number + Type 4 electro hydraulic single deck crane
SWL 60 mts
Outreach SWL 60mts - 20mtrs
Outreach SWL 50mts - 24mtrs
Outreach SWL 40mts - 30mtrs

Combinable above hatch 2/3/4 to 110 mts by means of a traverse beam location center, with offset to port side
In case cranes are working constantly for 24 hours owners have the option to carry out maintenance work thereafter.





ATLANTIC RO-RO CARRIERS, INC.

95 River Street, 3rd Floor, Hoboken, New Jersey, 07030
Tel: 201.356.2300 Fax: 201.356.2299 e-mail: info@arccm.com

Cargo Holds:

| Hold | Cubic w/o TWD | cubic with TWD in lower position | Hatchsize (L X B) |
|--------------|---------------|----------------------------------|-------------------------|
| 1 | 3.255 | 3.242 | 12.6m x 20.04m / 10.19m |
| 2 | 10.551 | 9.733 | 25.6m x 24.4m |
| 3 | 10.551 | 9.733 | 25.6m x 24.4m |
| 4 | 10.551 | 9.733 | 25.6m x 24.4m |
| 5 | 4.155 | 4.155 | 12.8m x 24.4m |
| Total 39.063 | | 36.609 | |

Tanktop sizes:

| | Tweendeck in holds 2/3/4 | Bottom Sizes (L x B) |
|---------|-------------------------------------|--------------------------|
| hold 1: | 227 sqm | 7.8/6.9 m x 20.1/10.2 m |
| hold 2: | 742 sqm | 30.4 m x 24.4 m |
| hold 3: | 742 sqm | 30.4 m x 24.4 m |
| hold 4: | 742 sqm | 30.4 m x 24.4 m |
| hold 5: | 197 sqm + 135 sqm (monkey rocks) | 13.6 m x 14.5 m (24.4 m) |
| Total: | | |

Total: = 2,650 sqm + 135 sqm (MR)
2,785 sqm tank

Clear height in Hold: 14,85 meters

Tanktop strength 20 mts/sqm
except on monkey rocks in hold 5 where it is 12 mts/sqm and 4 mts/sqm on racks when they are stored in hold 5
containers stack weight: 20'/40' - 150mts/150mts.

Hatch covers: hydraulic folding type hatchcovers covers
always one panel folding upright forward and aft Hatch Cover Sizes (L x B)

| | | |
|----------|-----------|-------------------------|
| hold 1 | 206 sqm | 6.9/6.1 m x 20.5/10.6 m |
| hold 2-4 | 2.067 sqm | 29.1 m x 26.5 m (each) |
| hold 5 | 352 sqm | 13.3 m x 26.5 m |
| Total: | 2.625 sqm | |





ATLANTIC RO-RO CARRIERS, INC.

95 River Street, 3rd Floor, Hoboken, New Jersey, 07030
Tel: 201.356.2300 Fax: 201.356.2299 e-mail: info@arrcm.com

fixed container fittings flush type

container stack weights: 60 mts per 20ft stack on hatches 2-5 /

28 mts on hatch 1

90 mts per 40ft stack on hatches 2-5 /

56 mts on hatch 1

70 mts per 20ft stack on deck in front of wheelhouse

Hatch cover strength 4 mts/sqm

Tweendeck container stack weights: 20'/40' - 30mts/30mts

Tweendeck in holds 2/3/4

Tweendeck strength 4 mts/sqm

Tweendeck height 2 times , 2 layers or 3 layers of 8'6' containers

Tween deck Principle TD panels outside and aft resting on titable foundations at side wall

TD panels inside (at cl) resting on movable supporting racks

One, two, three or all five TD panels continuously laid out from aft to fwd.

a. m. TD panels laid out one or both sides

TD supporting racks to be free of horizontal lashing and cargo forces

Holds equipped with lashing eyes to assist in withdrawing cargo from racks

Tweendeckpanels Panel Weight 23 mt unitweight

Panel Volume 63 cbm per unit

Tween Deck Racks Rack Weight 3,7 mts unitweight

in 2 x 8.5' tiers height Rack Volume 187 cbm per hold with 10 racks installed

or altern.

Tween Deck Racks Rack Weight 3,7 mts unitweight

in 3 x 8.5' tiers height Rack Volume 269 cbm per hold with 15 racks installed

Navigation/ Fitted with all modern nautical aids /satellite navigation / Communication: weather-chart recorder /
Inmarsat system / GMDSS / SAT F

All details and figures are about, except fuel specifications, and are believed to be correct

